



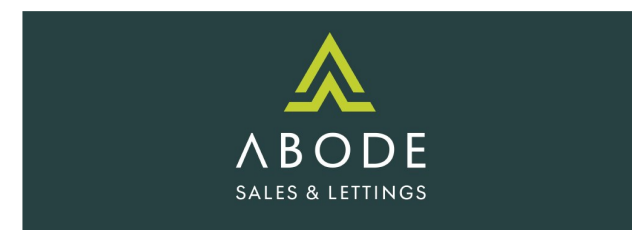


**** NEW BUILD** AND READY TO RESERVE**

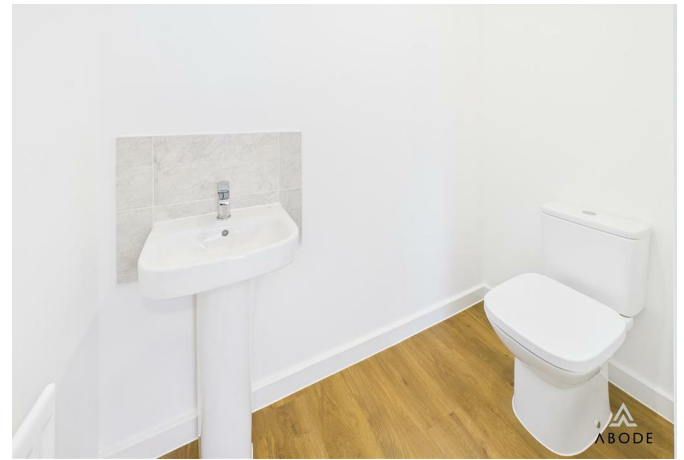
The Chesham is a generously sized three bedroom property. Inspired by tradition, it has a double fronted layout and features an attractive bay window which, together with French doors, make this a beautifully bright property. A welcoming hallway leads to two spacious rooms: an open plan kitchen and dining area, along with a spacious living room. Upstairs, bedroom one benefits from an en suite shower room and a built-in wardrobe. There is an additional two bedrooms plus a family bathroom.

KEY FEATURES

- 10 year NHBC warranty
- Built-in wardrobe to bedroom 1
- Double fronted home
- Dual aspect open plan kitchen / dining room
- En suite to bedroom 1
- Garage and parking
- Separate living room with bay window
- Three double bedrooms
- U-shaped kitchen



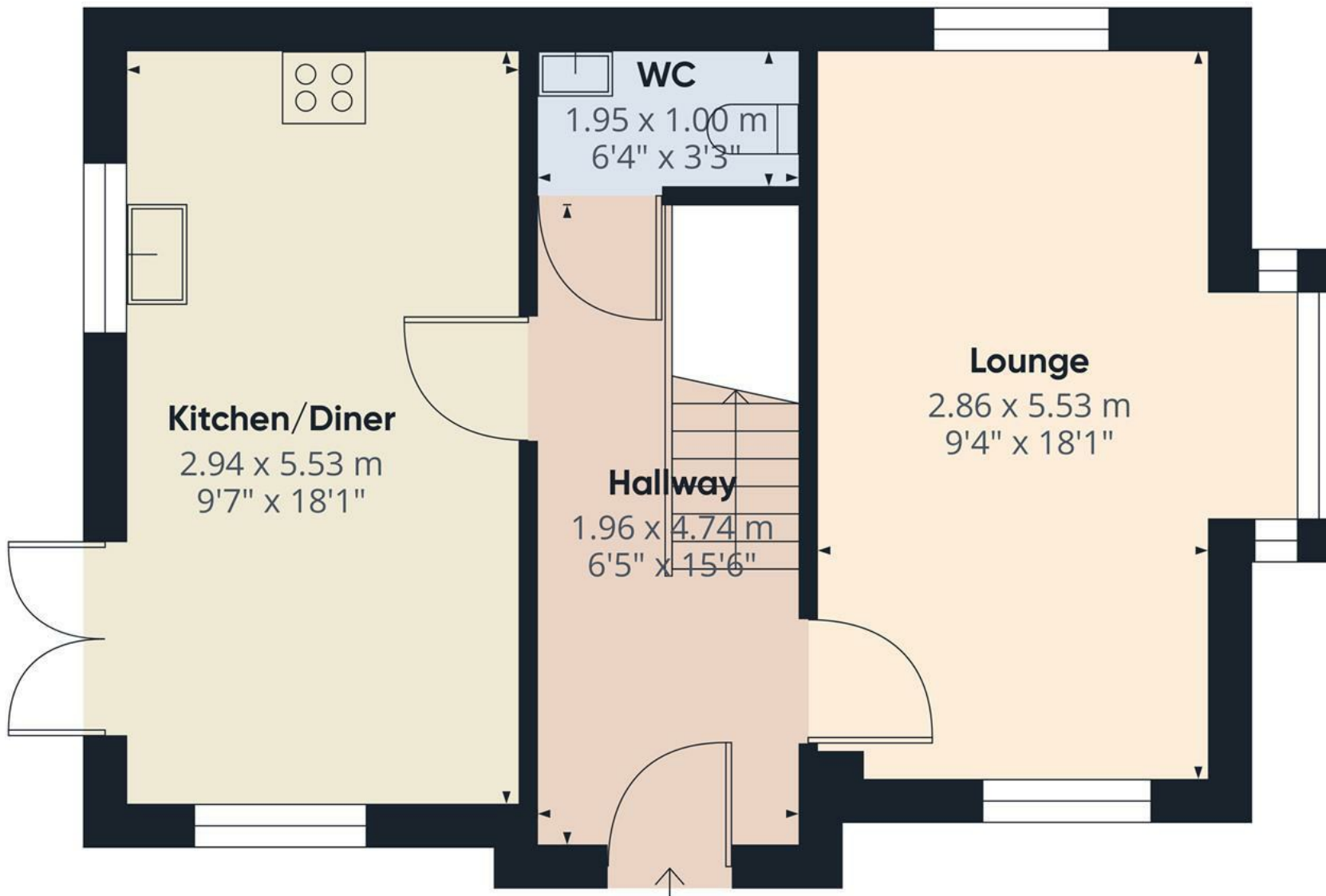












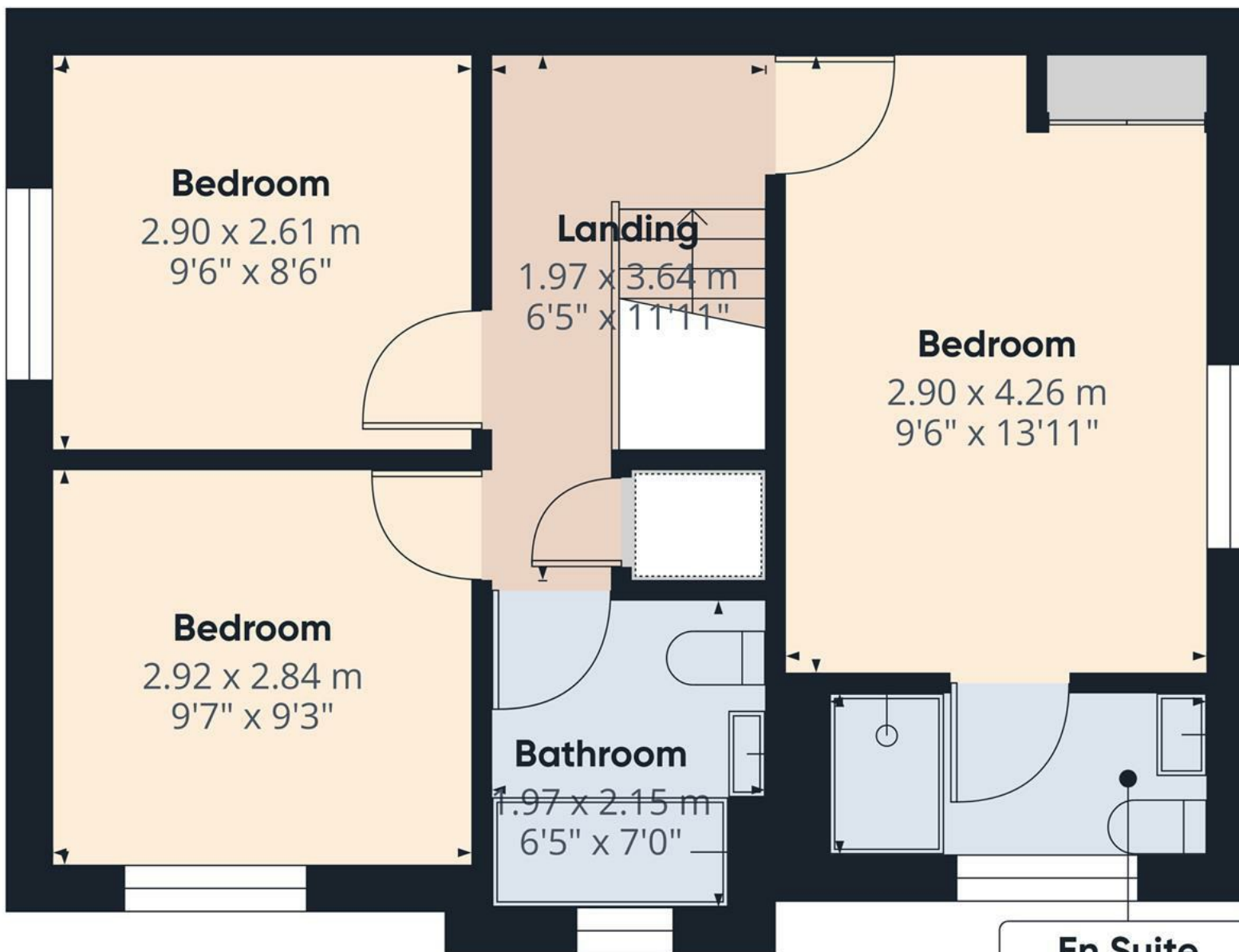
Floor 0

Approximate total area⁽¹⁾
45.3 m²
488 ft²

(1) Excluding balconies and terraces

Calculations reference the RICS IPMS 3C standard. Measurements are approximate and not to scale. This floor plan is intended for illustration only.

GIRAFFE360



Floor 1

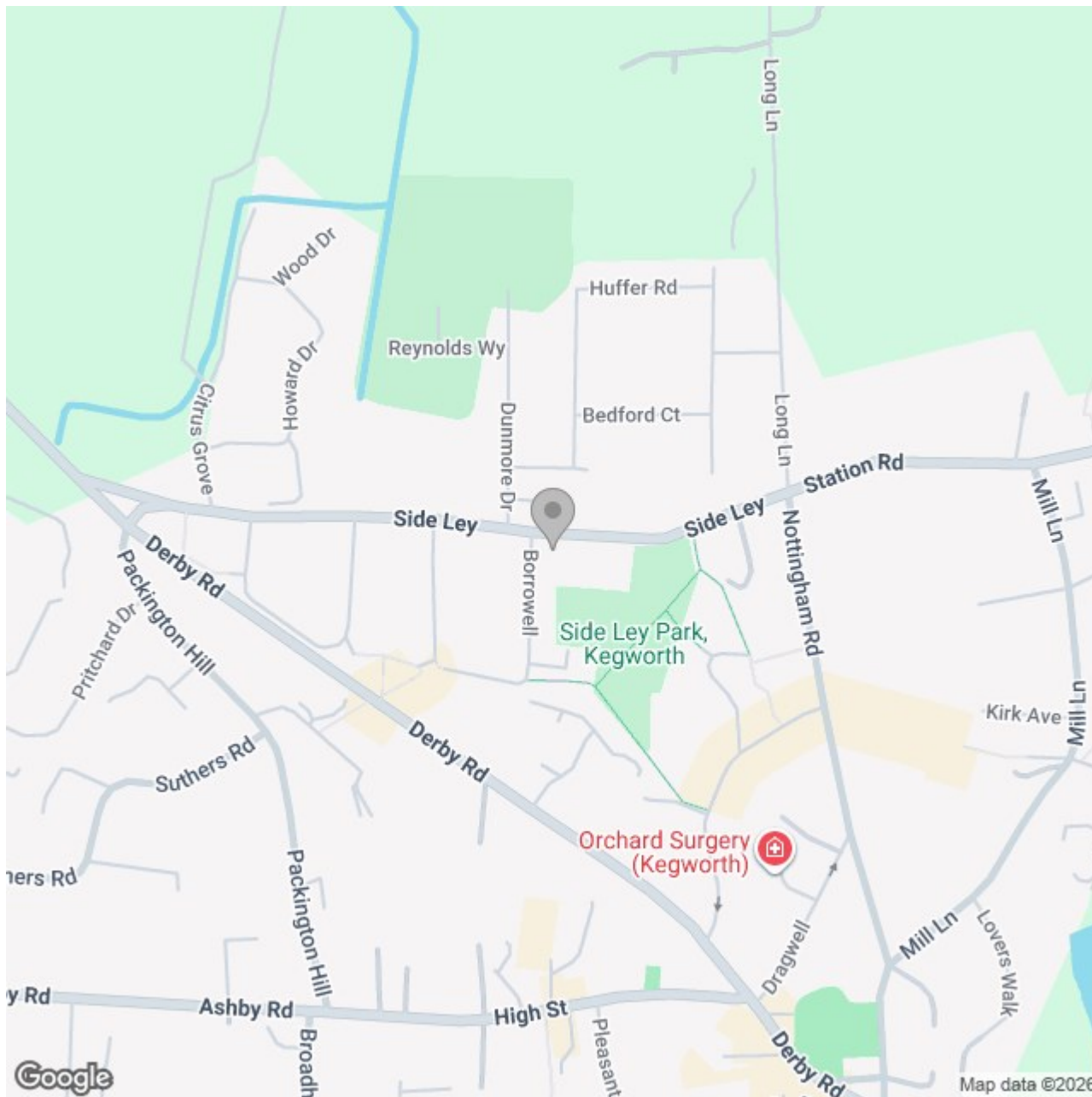
Approximate total area⁽¹⁾

39.9 m²
429 ft²

(1) Excluding balconies and terraces

Calculations reference the RICS IPMS 3C standard. Measurements are approximate and not to scale. This floor plan is intended for illustration only.

GIRAFFE360



Energy Efficiency Rating

	Current	Potential
Very energy efficient - lower running costs		
(92 plus) A		
(81-91) B		
(69-80) C		
(55-68) D		
(39-54) E		
(21-38) F		
(1-20) G		
Not energy efficient - higher running costs		
England & Wales	EU Directive 2002/91/EC 